

> CUSTOM TOOL CONTROL

Need to keep track of your tools? Foam tool organizers will make your life easier. Colour contrast design tells you in a quick glance if all items are accounted for. Eliminate FOD (Foreign Object Damage) caused by tools left in aircraft engines or other equipment. Available as single or multi-layer foam sets with compartments.

MINIMUM ORDER QUANTITIES

Call Peli for information on custom solutions for the 0450 Mobile Tool Chest.



Engineers plan your foam layout for the perfect fit.



Your layout is then transferred to your choice of foam to be cut using either (A) Water Jet Technology, (B) Die Cut Technology or (C) CNC router technology.



> 0450 MOBILE TOOL CHEST SPECIFICATIONS

INTERIOR DIMENSIONS (L X W X D)	EXTERIOR DIMENSIONS (L X W X D)	WEIGHT WITHOUT DRAWERS	WEIGHT WITH DRAWERS	COLOUR	CERTIFICATES
52.2 x 27.9 x 32.1 cm (20.56" x 10.97" x 12.65")	60.8 x 37.5 x 45.6 cm (23.95" x 14.75" x 17.95")	14.97 kg (33 lbs.)	18.82 kg (41.5 lbs.)	■	• MIL-STD-810F

PELI GUARANTEE OF EXCELLENCE

Peli guarantees its products against breakage or defects in workmanship. Peli cases are guaranteed to be watertight to a depth of 1 meter for 30 minutes (IP 67) unless otherwise stated if properly closed with undamaged o-ring in place. Peli's liability is limited to the case and not its contents. This guarantee does not cover the lamp or batteries (rechargeable or alkaline) for lights. Any liability, either expressed or implied, is limited to replacement of the product. This guarantee is void if the Peli™ product has been abused beyond normal and sensible wear and tear. This guarantee does not cover shark bite, bear attack or damage caused by children under five.



InnoCatch
Havendijk 22
4201 XA Gorinchem
tel 0183-690122
email: informatie@innocatch.nl
www.innocatch.nl

**PELI GUARANTEE
OF EXCELLENCE**

©2009 Peli Products S.L. All trademarks and logos displayed herein are registered and unregistered trademarks of Peli Products, S.L. and others.

RUGGED MOBILE MAINTENANCE



> INTRODUCING THE 0450 MOBILE TOOL CHEST



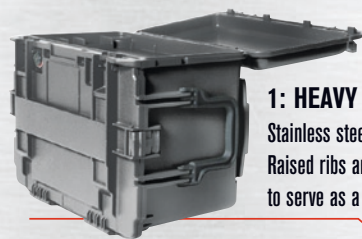
> 0450 MOBILE TOOL CHEST

The U.S. Army tasked Peli with building a mobile tool chest to house tools for its maintenance engineers. Rapid deployment to harsh environments is common; arriving with your tools intact and fully functional is mission critical.

Over a two year period of intensive design, research and testing,

Peli Products built the world's toughest mobile tool chest for use by the U.S. Armed Services. Over 70 tests were required, including water submersion, extreme temperature tests and drop tests from 1,5 meters fully loaded. The 0450 passed all of them.

The 0450 Mobile Tool Chest: now ready for civilian use.



1: HEAVY DUTY BUTTRESS HINGES

Stainless steel hinge pins provide extra protection from impact. Raised ribs are designed to stop the lid at 180 degrees when opened to serve as a work space, supporting up to 23 kg.

2: AUTO PRESSURE EQ VALVES



The 0450 has two built-in Automatic Pressure Equalization Valves: one for the top lid and the second for the main compartment. They make opening the case easier

after altitude changes by balancing the interior pressure with the ambient pressure.



3: TWO WAY HANDLES (one on each end)

The 0450 case can be lifted from the tool chest position or the transport position.



4: STABLE, WIDE TRACK MOBILITY

The 0450 has 5 cm polyurethane wheels for optimum load distribution over soft terrain.

By locating them on the back of the chest, they offer a wide, stable track. This also leaves the front of the chest clear of wheel obstructions, creating more usable drawer space within the case.



5: REMOVABLE DRAWERS

The 0450 Mobile Tool Chest is available with removable shallow and deep drawers constructed of the same indestructible material as the case.



6: HYBRID DOUBLE STEP-BUTTERFLY LATCHES

The 0450 incorporates the same robust design of Peli's patented Double-Step Latch but has been upgraded with a metal butterfly compression latch.



7: GRADUATED DEFLECTOR RIBS

Deflector ribs protect the hinges and latches from shipping damage by diverting the energy away from the case. They are rounded off to make rolling the 0450 onto its back easy when it's ready for transport.



8: SECURE STACK DESIGN

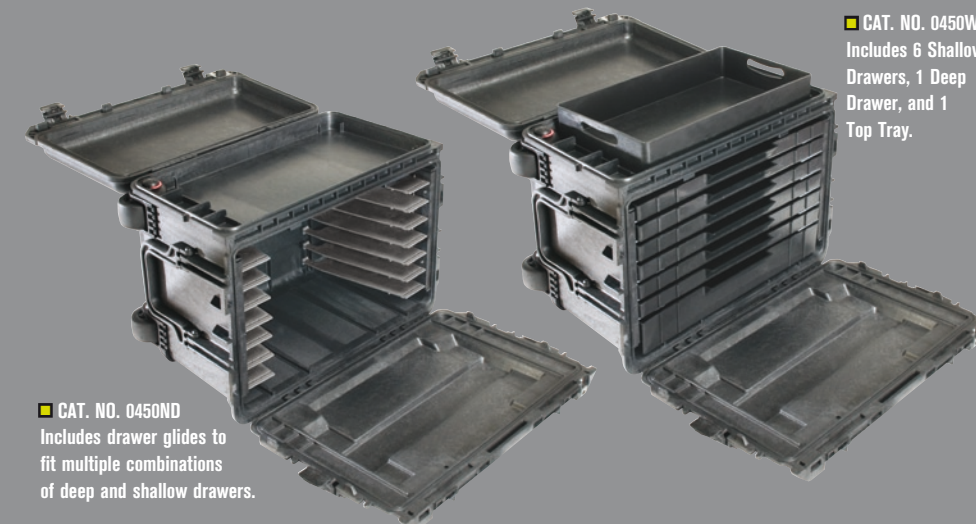
Extra deep pockets mate with the foot blocks on the bottom of the 0450 Mobile Tool Chest. This "Block-In-Pocket" design locks the cases together to prevent lateral movement.



9: TROLLEY HANDLE AND WHEEL SYSTEM

Using simple fasteners, the trolley handle and wheels can be replaced in the field. This also assures easy cleaning should debris become lodged within the parts.

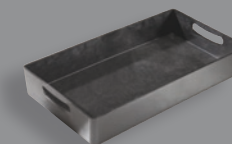
> CONFIGURATIONS



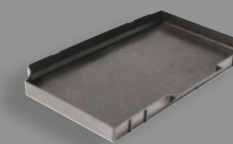
■ CAT. NO. 0450WD
Includes 6 Shallow Drawers, 1 Deep Drawer, and 1 Top Tray.

■ CAT. NO. 0450ND
Includes drawer glides to fit multiple combinations of deep and shallow drawers.

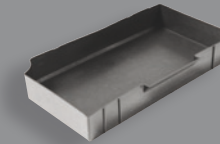
Drawers can also be purchased separately.



■ CAT. NO. 0455TT



■ CAT. NO. 0455DS

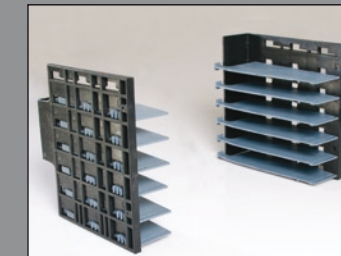


■ CAT. NO. 0455DD

> DRAWER ASSEMBLY

CUSTOMIZE YOUR 0450

The modular design of the 0450 Mobile Tool Chest allows you to adjust the number and position of glides to accommodate a multitude of drawer configurations.



Adjustable glides allow for multiple drawer configurations



Choose shallow drawers, deep drawers or a mix and match

0450 DRAWER CONFIGURATIONS	
DEEP	SHALLOW
3	2
4	0
2	4
1	6
0	8

Multiple combinations available

> TOOL CONTROL

ELASTIC STRAP SOLUTION

Peli's versatile nylon elastic strap system fits any tool and keeps it firmly in place during transport. Tool pallets are available in vertical or horizontal configuration.



■ CAT. NO. 0457
Horizontal tool pallet



■ CAT. NO. 0456
Vertical tool pallet

CUSTOM FOAM SOLUTION

Secure and protect your valuables with a customized foam solution, (see back panel for additional foam solutions).

